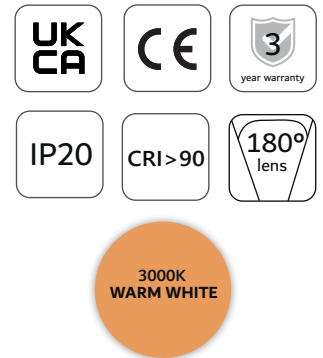


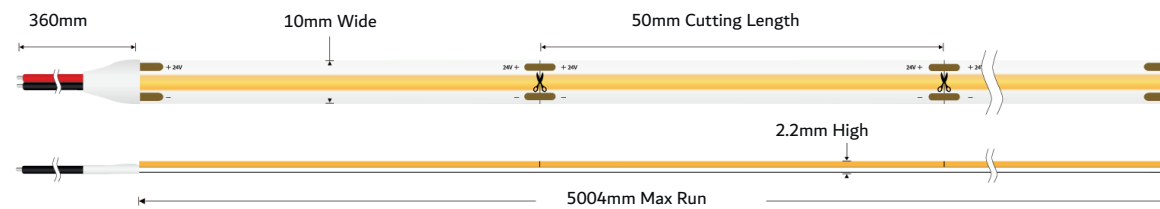
UQS-COB-12W-WW-24V

Professional Led Strip, 12 W/m



TECHNICAL DETAILS

SUPPLY VOLTAGE	24 V ± 0.5 VDC
POWER	12 W/m
CURRENT	0.5 A/m
POWER PER REEL (5M)	60 W
COLOR TEMPERATURE	3000K
BEAM ANGLE	180°
LUMINOUS FLUX PER METER	1060 lm
CRI	90
MAXIMUM LENGTH FOR ONE SIDED SUPPLY	5 m
IP PROTECTION DEGREE	IP20
WORKING TEMPERATURE	-20°C ~ 50°C
STORAGE TEMPERATURE	-30°C ~ 80°C
LED QTY (PER METER)	480 LEDs/m
WIDTH PCB	10 mm
CUT SECTION	50 mm
CONNECTION WIRE	2 x AWG20 (0.52 mm ²) stranded wire, length = 360 mm: V+: red: V:-black
DIMENSIONS (L * W * H)	5004 x 10 x 2.2 mm
PACKING	5 m / roll (bag); 50 pcs / ctn; ctn dimensions: 45 x 45 x 26.5 cm



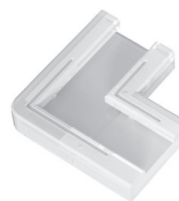
CONNECTORS PCB Width 10 mm



UQS-COB-12W-SS



UQS-COB-12W-CS

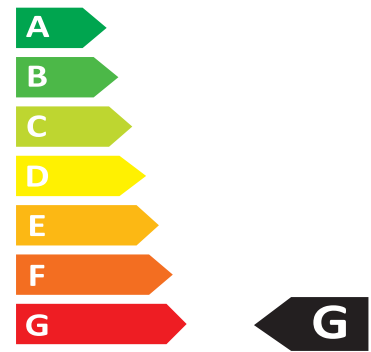


UQS-COB-12W-SS-L



MW LIGHTING

UQS-COB-12W-WW-24V



6
kWh/1000h